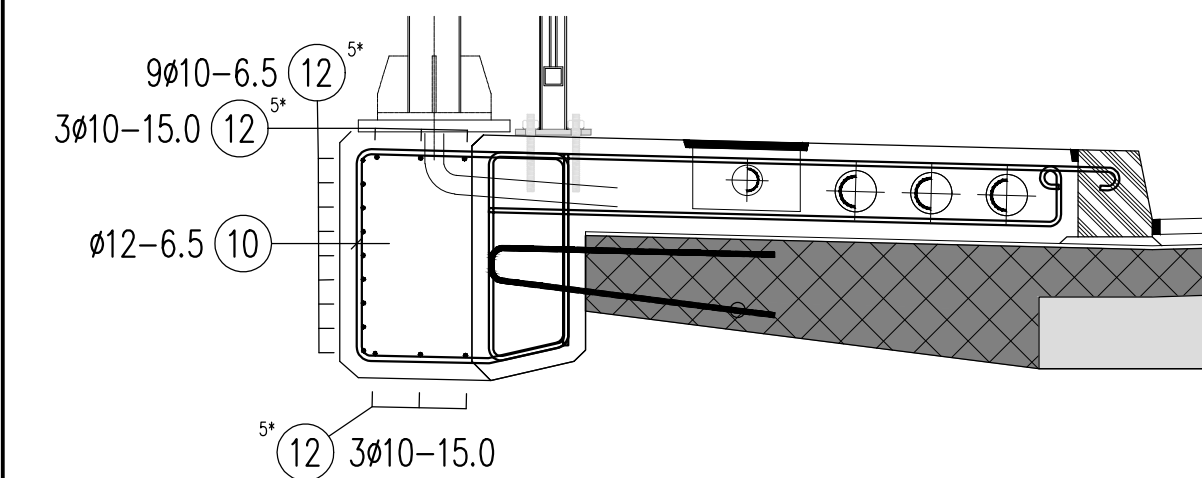
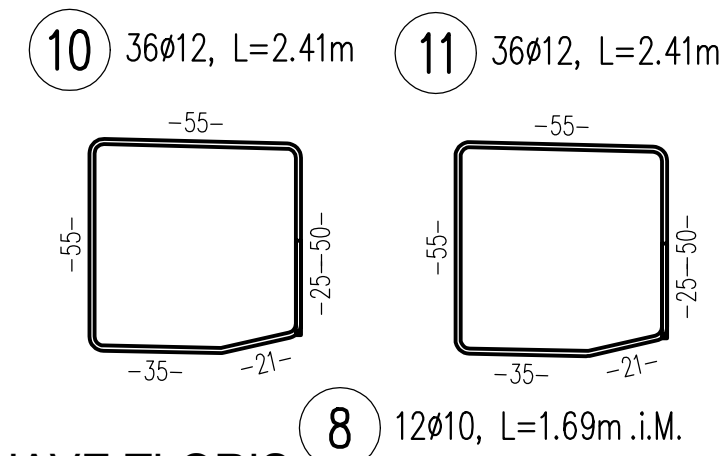
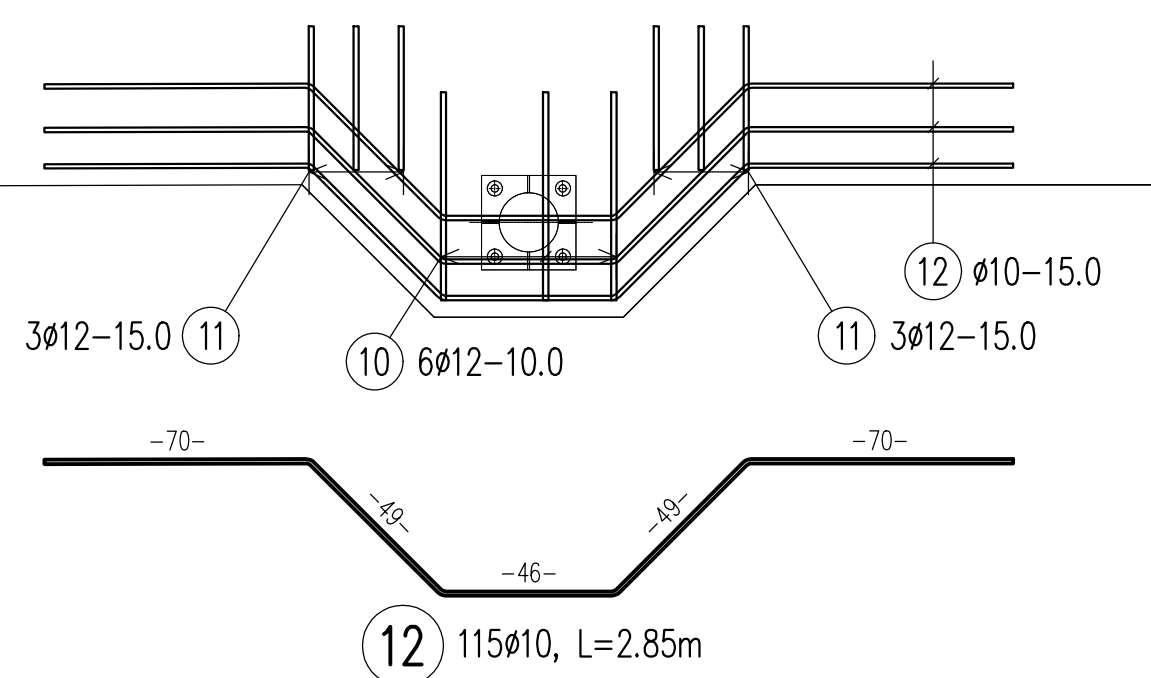


ROBNI VENEC "A" M1:20

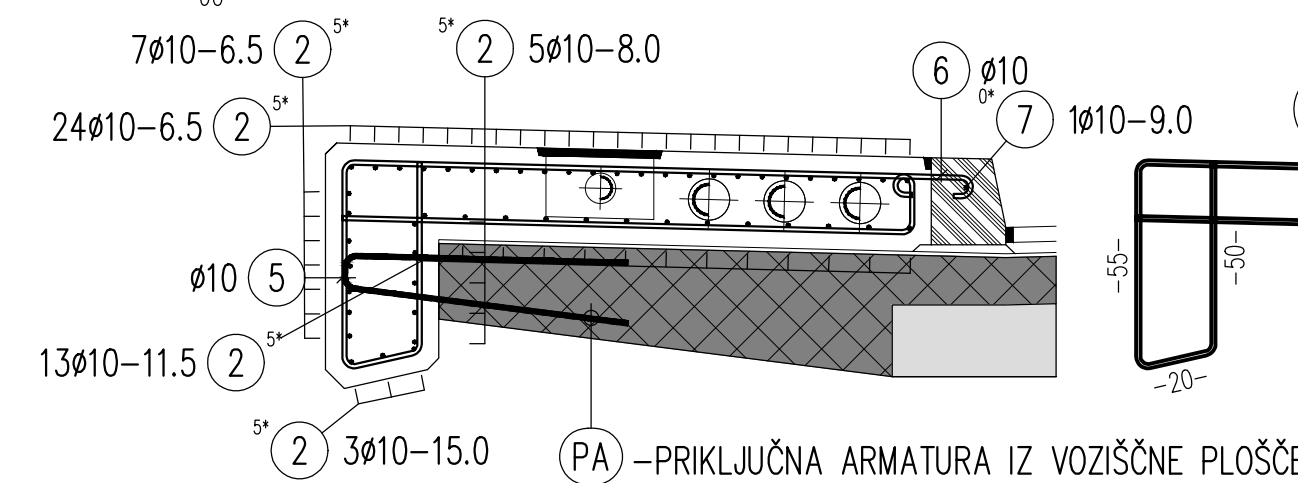


ROBNI VENEC "A" M1:20

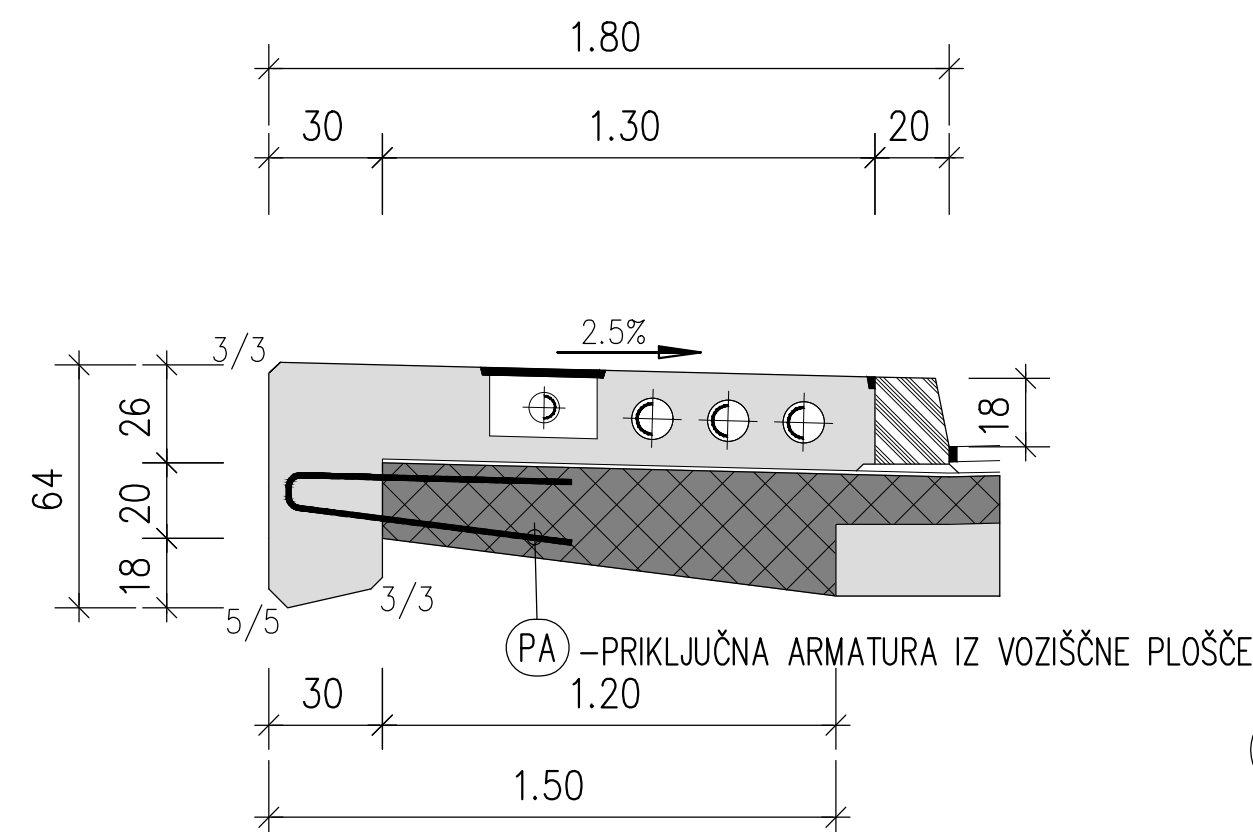


Poz.	-b-[m]	-L-[m]
4x8.1	0.46	1.66
4x8.2	0.49	1.69
4x8.3	0.52	1.72

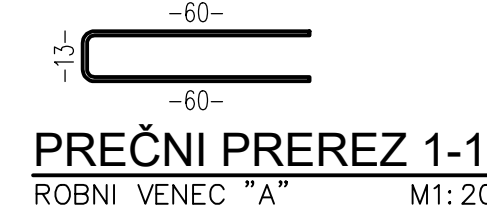
ROBNI VENEC "A" M1:20



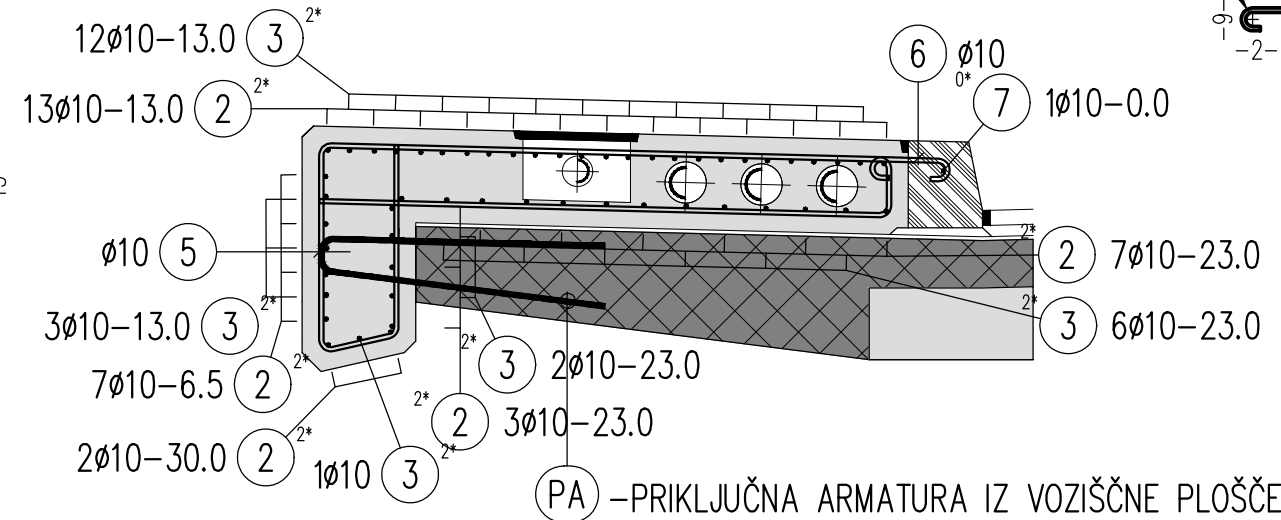
ROBNI VENEC "A" M1:20



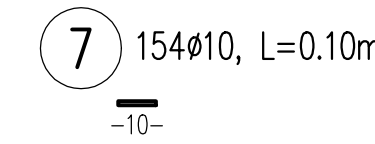
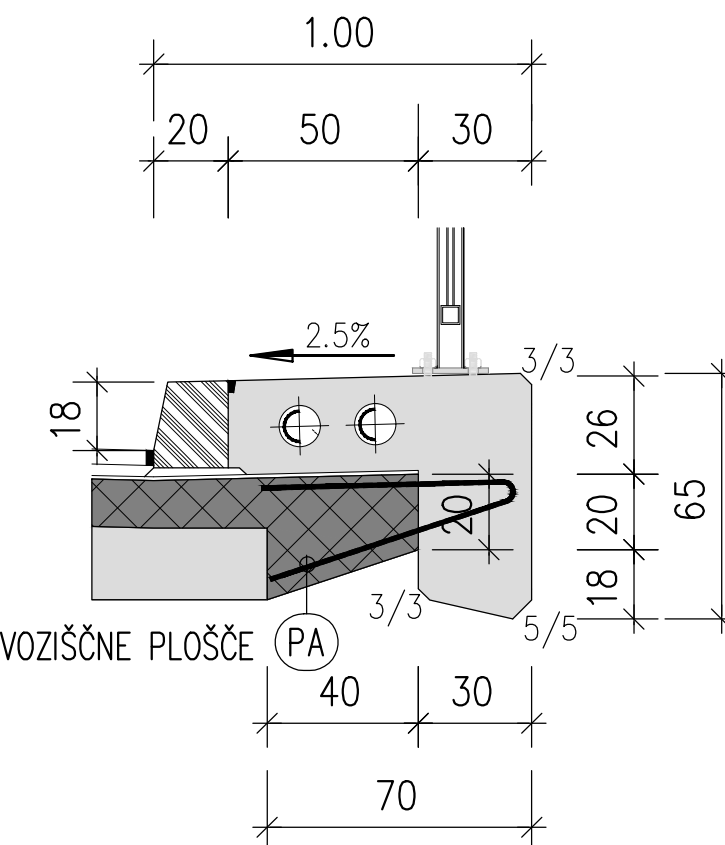
9. $\frac{1}{2} \log_2 16 = 2$ (correct)



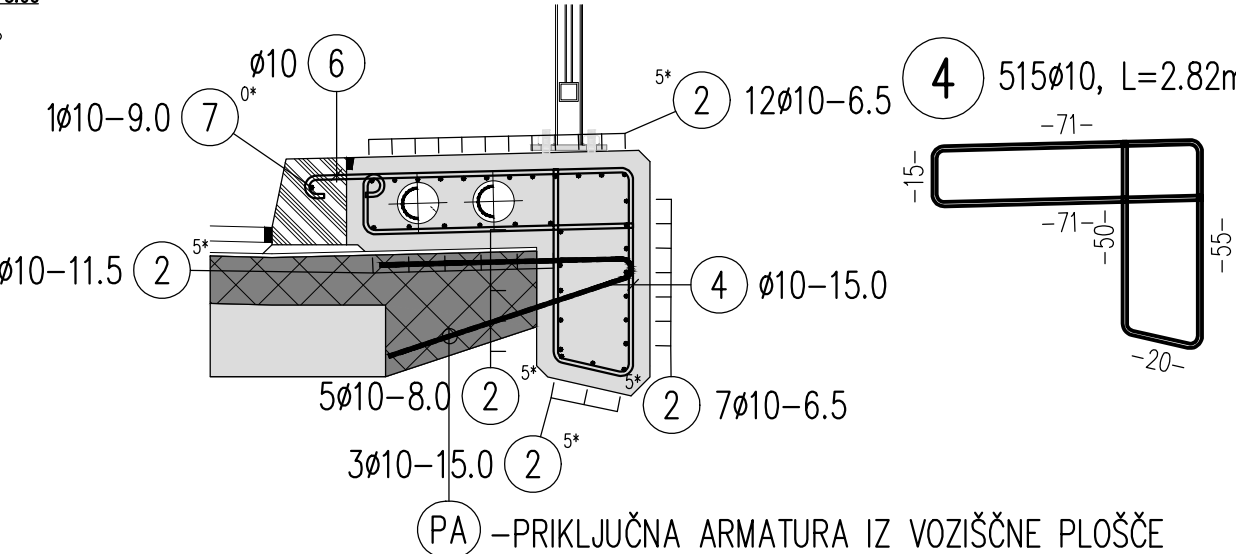
ROBNI VENEC "A" M1:20



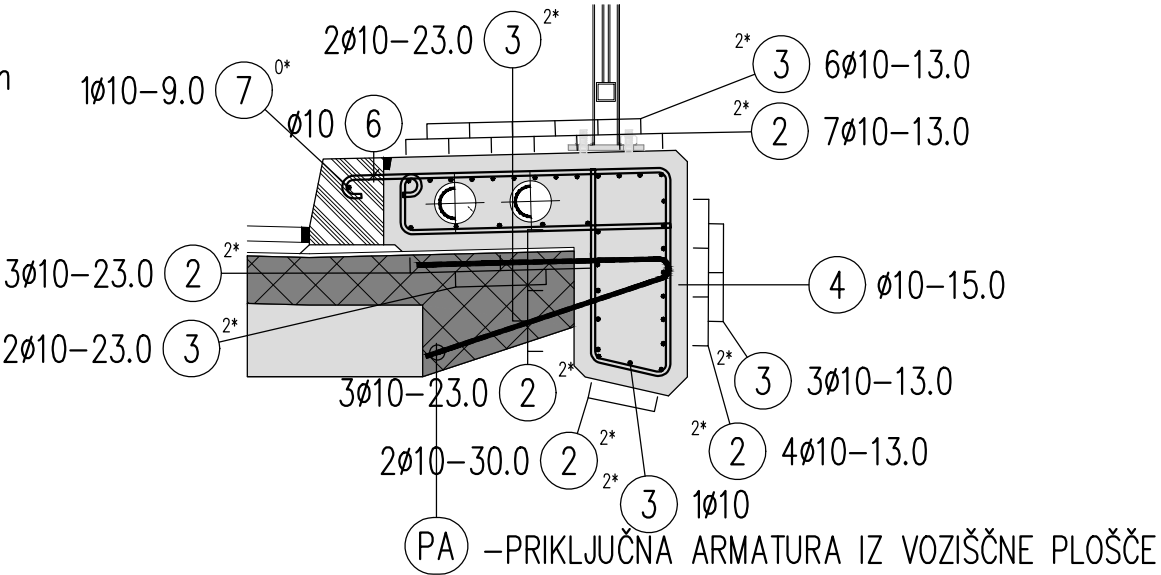
ROBNI VENEC "B"	M1: 20
-----------------	--------



ROBNI VENEC "B" M1:20



ROBNI VENEC "B" M1:20

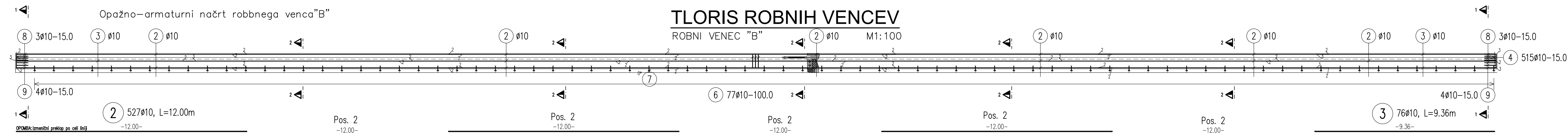


Pos.	SCHEDULE	Steelgrade:	B500B
BAR	No. D	Length	D10 D12
2	527 10	12000	6324000
3	76 10	9360	711360
4	515 10	2880	1452300
5	515 10	4420	2275200
6	154 10	370	56980
7	154 10	100	15400
8	12 10	16900	20820
9	26 10	1330	34580
10	36 12	2410	
11	36 12	2410	
12	115 10	2850	327750
* = in average			
Total lengths		11218950	17352
kg / m		D10 0.617	D12 0.888
kg / d		6922.92	154.08
Total weight (kg)		7076.178	
Fixed and standard lengths Steelgrade: B500B			
D(mm)	Tot. L	kg/m	Weight(kg)
10	7050760	0.617	4350.319
12	7070760		4350.319
machined Steelgrade: B500B			
D(mm)	Tot. L	kg/m	Weight(kg)
10	4168190	0.617	2571.773
12	173520	0.888	154.086
Total weight (kg)		2725.859	
Summary of the schedule Steelgrade: B500B			
Fixed and standard lengths		4350.319	
machined		2725.859	
Total weight (kg)		7076.178	

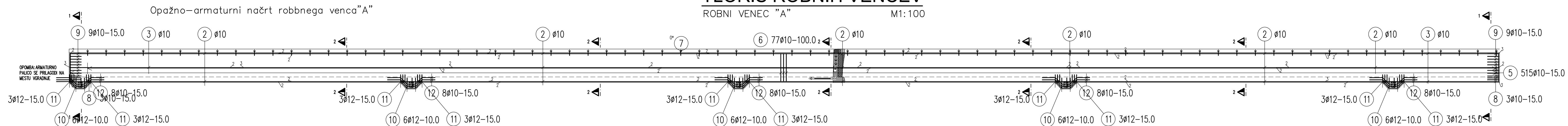
Element	Beton (sist EN 206-1)	Zašč. sloj
plošča in nove konzole	C 30/37 - XD1, XF3	4,5cm
Hodnik in robni venci	C 30/37 - XD3, XF4	4,5cm


Armatura
B500 (B)

ROBNI VENEC "B" (2) Ø10 M1:100



ROBNI VENEC "A" M1:100



naročnik:	Občina Zalec Ulica Savinjske cete 5 3310 Zalec		NAČRT GRADNENJE KONSTRUKCIJ datum: november 2010 št. projekta: 954/20 št. načrta: 2147 merilo: 1: 20, 100	
izvajalec:	 Inženirsko stacionarno biro, d.o.o. Glavni trg 17/b, 2000 Maribor		projekat: Most čez Savinjo in most čez inundacijsko odprlino na LC 490010 Petrolce - Kasaze opis gradnje: Izvedba razpisne in sanacija mostu čez Savinjo in mostu inundacijsko odprlino na obdinski cesti LC 490010 Petrolce - Kasaze	
id. številka:	IZS 0438		faza: PZI sanacija	
podizvajalec:			opis risbe: ARMATURNI NAČRT ROBNIH VENCEV MOSTU	
ime in priimek	podpis	št. oddaka	arhivska številka	faza/objekt
vodja projekta ident. št. IZS	M. Krajnc IZS G-0584		004.2160
odg. projektant ident. št. IZS	M. Krajnc IZS G-0584	šifra risbe: G.2712	druga koda arhiva	
		št. priloge: G.19		
izdelal:	G. Bajc inž. gr.	avtor risbe:	ISB d.o.o., Maribor	
		id. št. risbe:	954/20-G19	